

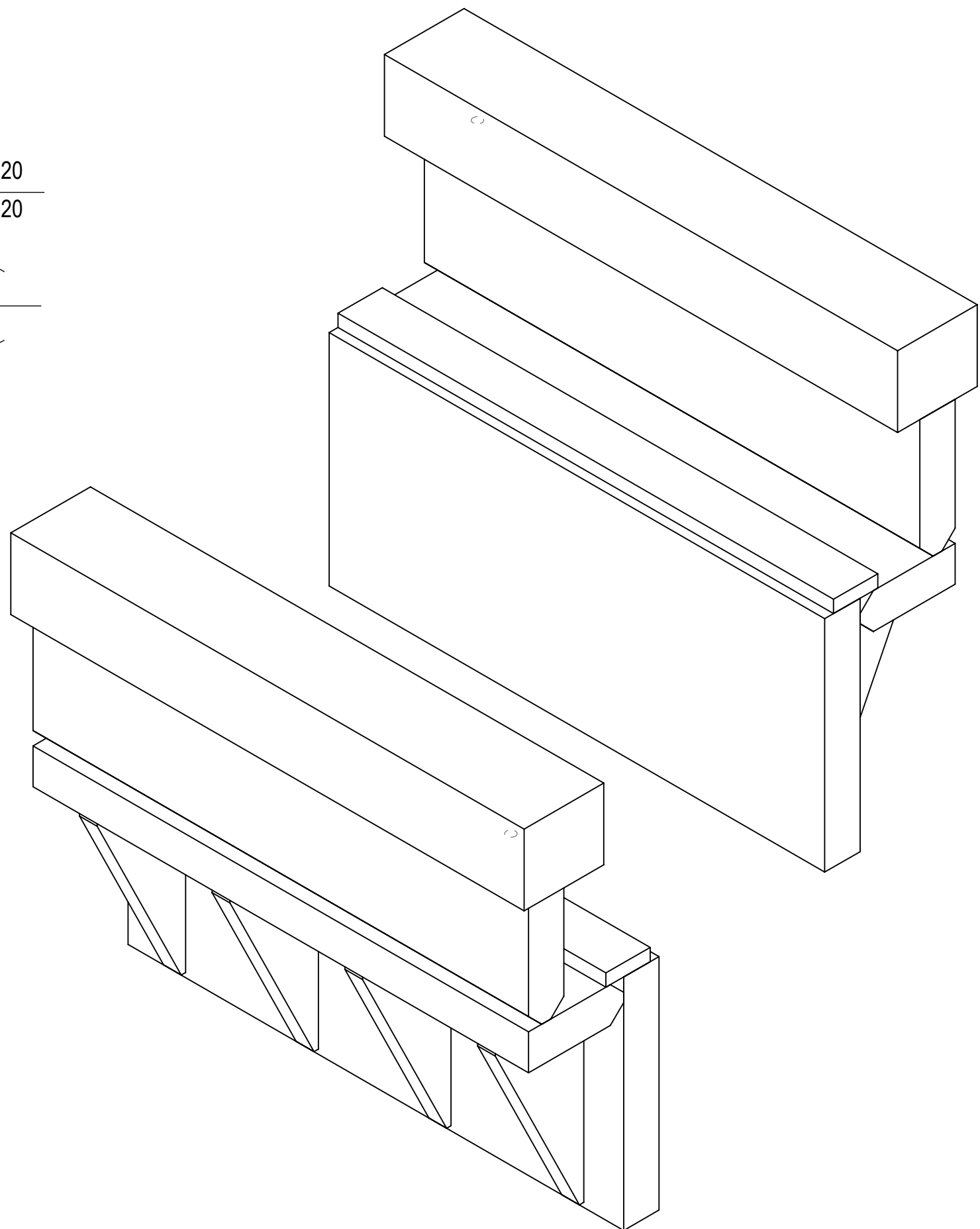
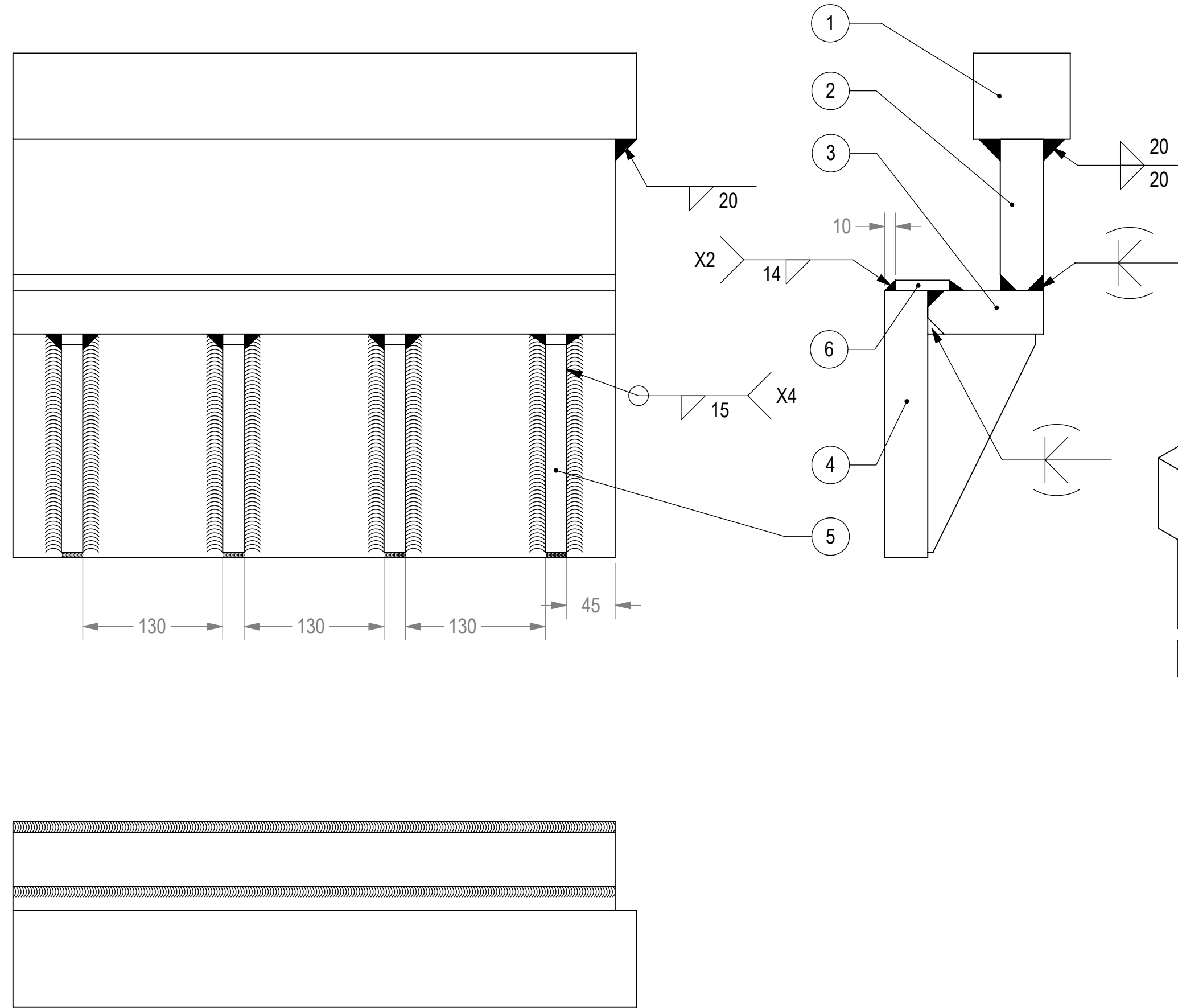
THIS DOCUMENT AND THE INFORMATION CONTAINED IN IT ARE PROPRIETARY AND CONFIDENTIAL TO ELBIT SYSTEMS LTD. NO PERSON IS ALLOWED TO COPY, REPRINT, REPRODUCE OR PUBLISH ANY PART OF THIS DOCUMENT NOR DISCLOSE ITS CONTENTS TO OTHERS, NOR MAKE ANY USE OF IT, NOR ALLOW OR ASSIST OTHERS TO MAKE ANY USE OF IT-UNLESS BY THE PRIOR WRITTEN EXPRESS AUTHORIZATION OF ELBIT SYSTEMS LTD. AND THEN ONLY TO THE EXTENT AUTHORIZED. (C) COPYRIGHT-ELBIT SYSTEMS LTD, 2001

SHEET REV STATUS

ALL SHEETS ARE THE SAME REVISION

REVISION RECORD

REV	ECO	DESCRIPTION	DATE	APVD
01		VARIOUS CHANGES.	30.5.2021	UDI ORON
02		NOTE 2 WELDING CHANGED.	8.6.2021	UDI ORON
03		SEE SHEET 2. DIM. 60 WAS 57. DIM. $\phi 45+0.05$ WAS $\phi 45+0.1$.	15.6.2021	UDI ORON



WELDING

- NOTES:
- AFTER WELDING AND MACHINING DEBURR AND REMOVED SHARP EDGES.
 - WELDING: WELD PER IMI SPECIFICATION PS 88.57.04 E. USE WIRE ER 70S6 PER AWS 5.18. WIRE DIAMETER 1mm OR 1.2mm.
 - FINISH: PAINT PER IMI SPECIFICATION PS 88.53.02 E. USE EPOXY PRIMER AND EPOXY TOP COATING. TOP COATING COLOR BLACK 27038 PER FED-STD-595C OR CLOSE TO IT.

6	06360-12013-01	SUPPORT PLATE	1
5	06360-12009-01	RIB	4
4	06360-12008-01	VL PLATE	1
3	06360-12007-01	H PLATE	1
2	06360-12006-01	VU PLATE	1
1	06360-12005-01	UPPER MOUNT	1
ITEM NO.	PART NUMBER	DESCRIPTION	

APPLICABLE STANDARDS:
 INTERPRET THIS DRAWING IAW ASME Y14.100-2017.
 ASME Y14.5-2009, DIMENSIONING AND TOLERANCING IN MM.
 CTS - 100% LOT INSPECTION. CTS VII - LOT INSPECTION IAW MIL-STD-1916 VL=VII. MTF V - LOT INSPECTION IAW MIL-STD-1916 VL=V.
 CTR - 100% LOT INSPECTION. CTR VII - LOT INSPECTION IAW MIL-STD-1916 VL=VII. MTF VI - LOT INSPECTION IAW MIL-STD-1916 VL=VI.
 DIM. W/O MARKING - LOT INSPECTION IAW MIL-STD-1916 VL=IV OR VL=III.

NEXT ASSEMBLY
 06360-12000-101

Approximate Weight: 135,95 [Kg]

UNLESS OTHERWISE SPECIFIED

PROFILE: N/A

TOLERANCES
 LINEAR ISO-2768-m
 ANGULAR ISO-2768-m

1st ANGLE PROJECTION

SURFACE TEXTURE IN Micro Meter

CONTRACT NO

FCTN	NAME	SIGN	DATE
DRW	GILA K.		
CHKD	UDI ORON		

P.O.B 1044 Ramat Hasharon, 4711001, Israel

TITLE
FRONT LH INNER BASE

SIZE	CAGE CODE	DWG NO	REV
C	3971A	06360-12004-101	03

SCALE 1:4 AUTOMATED DRAWING (SW) SHEET 1 OF 2

DWG NO

06360-12004-101

SH 1

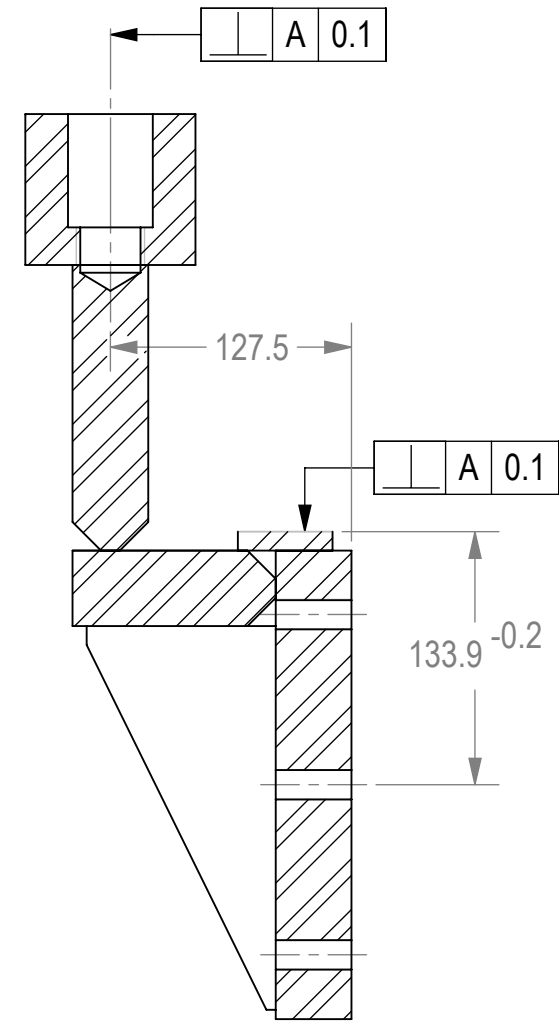
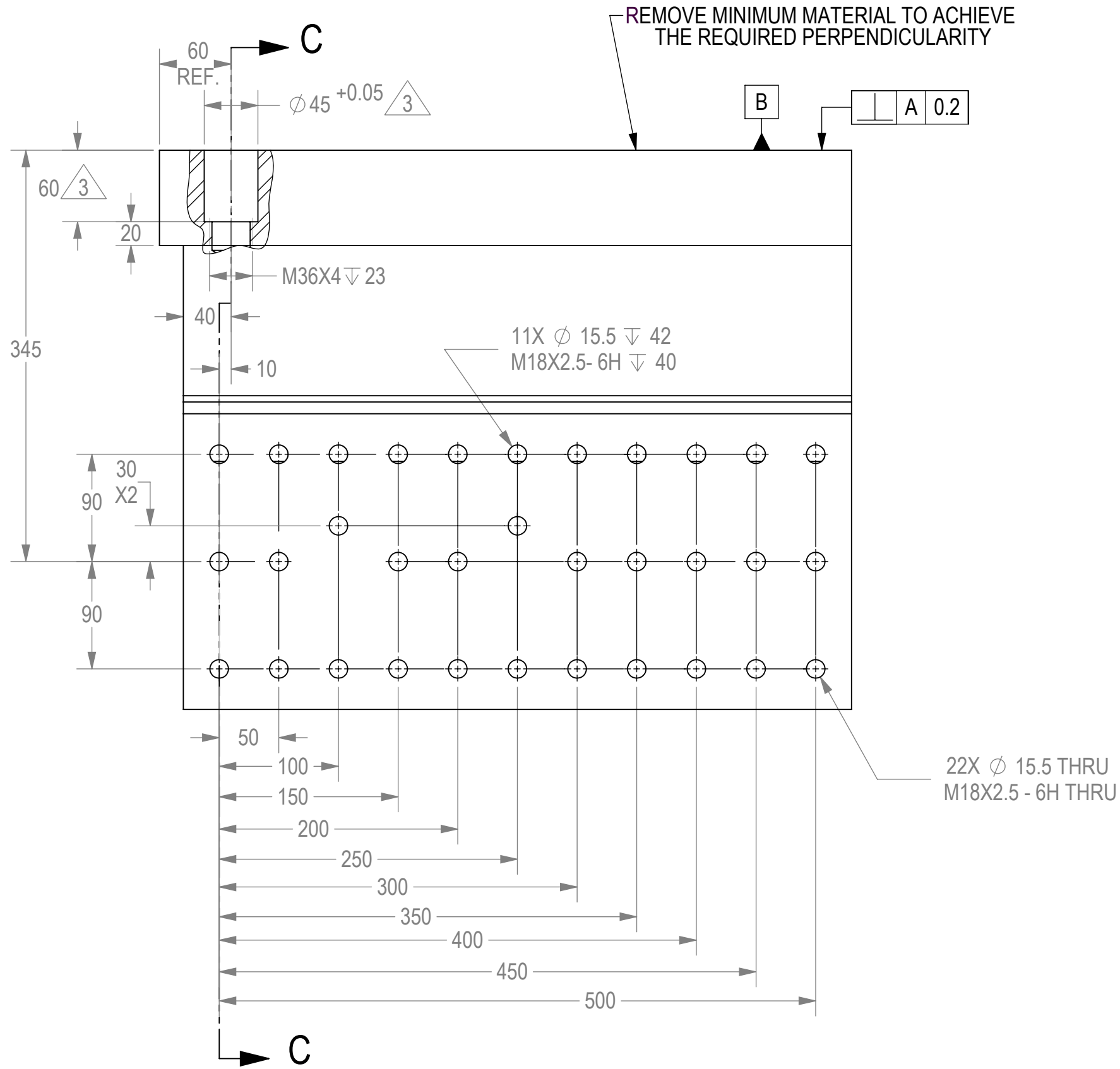
THIS DOCUMENT AND THE INFORMATION CONTAINED IN IT ARE PROPRIETARY AND CONFIDENTIAL TO ELBIT SYSTEMS LTD. NO PERSON IS ALLOWED TO COPY, REPRINT, REPRODUCE OR PUBLISH ANY PART OF THIS DOCUMENT NOR DISCLOSE ITS CONTENTS TO OTHERS, NOR MAKE ANY USE OF IT, NOR ALLOW OR ASSIST OTHERS TO MAKE ANY USE OF IT-UNLESS BY THE PRIOR WRITTEN EXPRESS AUTHORIZATION OF ELBIT SYSTEMS LTD. AND THEN ONLY TO THE EXTENT AUTHORIZED. (C) COPYRIGHT-ELBIT SYSTEMS LTD, 2001

SHEET REV STATUS

ALL SHEETS ARE THE SAME REVISION

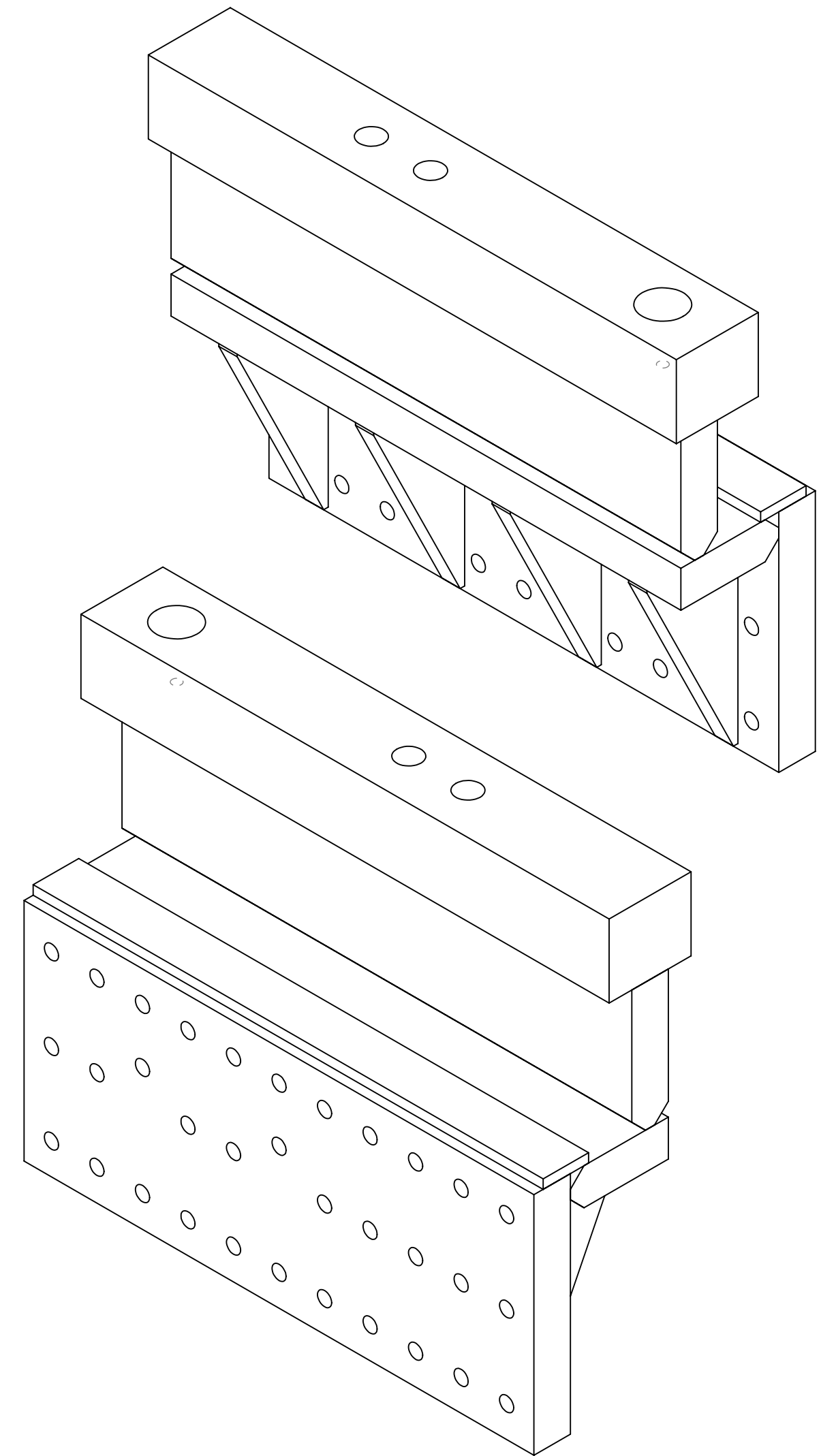
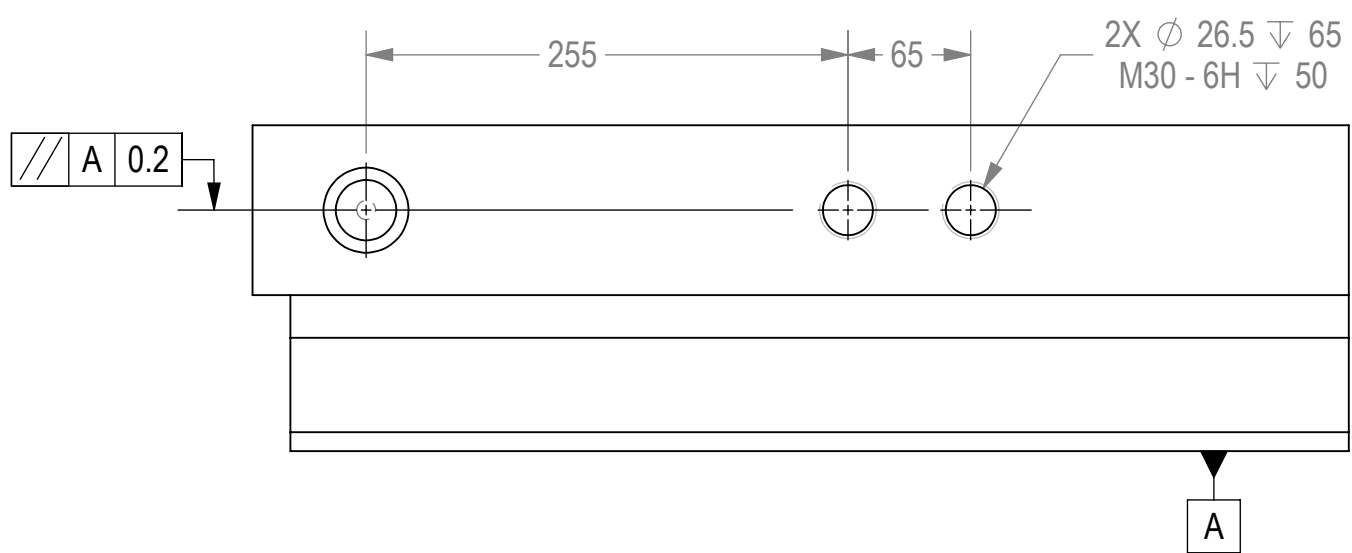
REVISION RECORD

REV	ECO	DESCRIPTION	DATE	APVD



SECTION C-C
SCALE 1:4

MACHINING



APPLICABLE STANDARDS:
 INTERPRET THIS DRAWING IAW ASME Y14.100-2017.
 ASME Y14.5-2009, DIMENSIONING AND TOLERANCING IN MM.
 CTS - 100% LOT INSPECTION. CTS VII - LOT INSPECTION IAW MIL-STD-1916 VL=VII. MTF V - LOT INSPECTION IAW MIL-STD-1916 VL=V.
 CTR - 100% LOT INSPECTION. CTR VII - LOT INSPECTION IAW MIL-STD-1916 VL=VII. MTF VI - LOT INSPECTION IAW MIL-STD-1916 VL=VI.
 DIM. W/O MARKING - LOT INSPECTION IAW MIL-STD-1916 VL=IV OR VL=III.

NEXT ASSEMBLY
 06360-12000-101

Approximate Weight: 135.947 [Kg]

UNLESS OTHERWISE SPECIFIED

PROFILE: ∇ N/A

TOLERANCES
 LINEAR ANGULAR

ISO-2768-m ISO-2768-m

1st ANGLE PROJECTION

∇ \oplus

SURFACE TEXTURE IN Micro Meter

CONTRACT NO

FCTN NAME SIGN DATE

DRW GILA K.

CHKD UDI ORON

Elbit Systems Land P.O.B 1044 Ramat Hasharon, 4711001, Israel

TITLE
FRONT LH INNER BASE

SIZE C CAGE CODE 3971A DWG NO 06360-12004-101 REV 03

SCALE 1:4 AUTOMATED DRAWING (SW) SHEET 2 OF 2

DWG NO 06360-12004-101

SH 2