

4

3

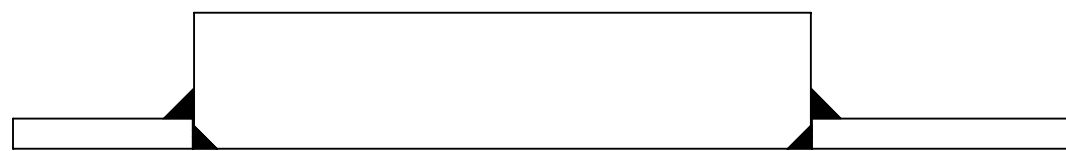
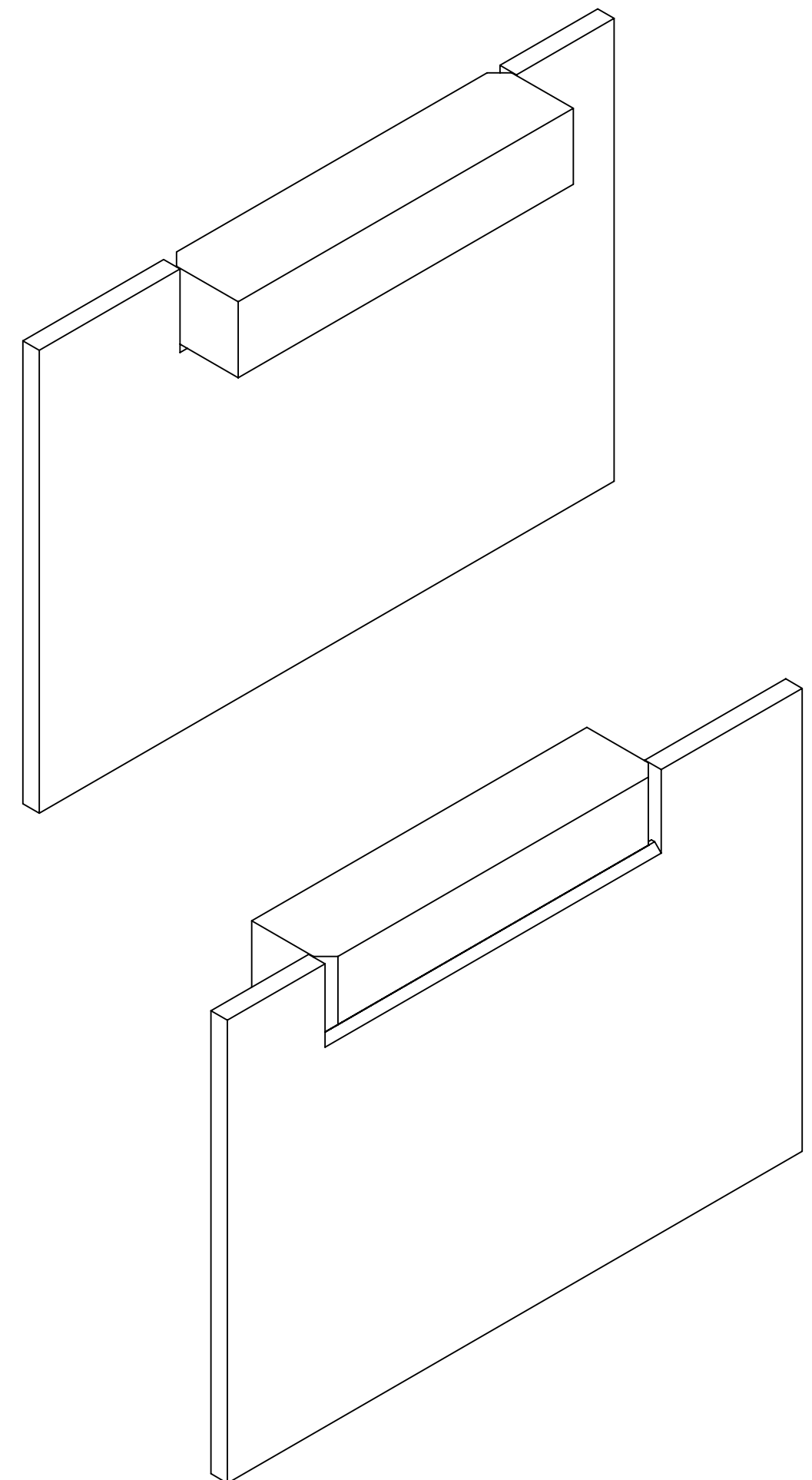
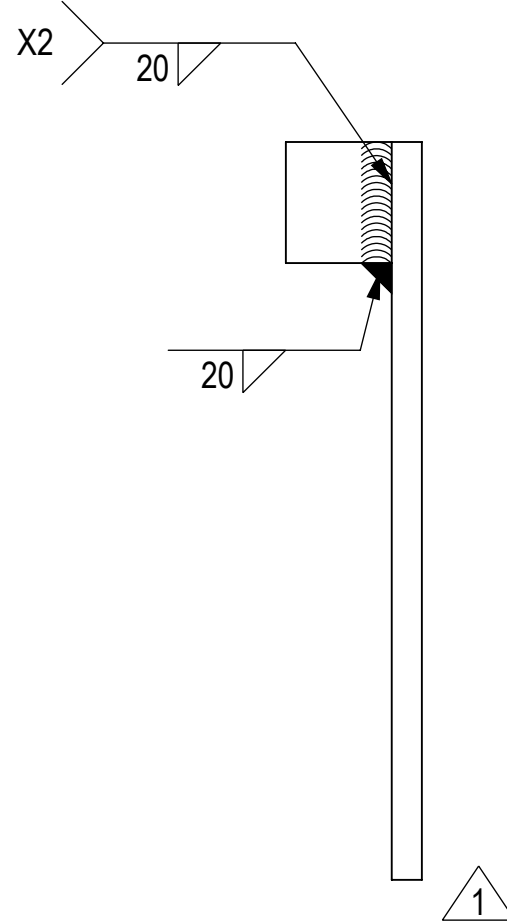
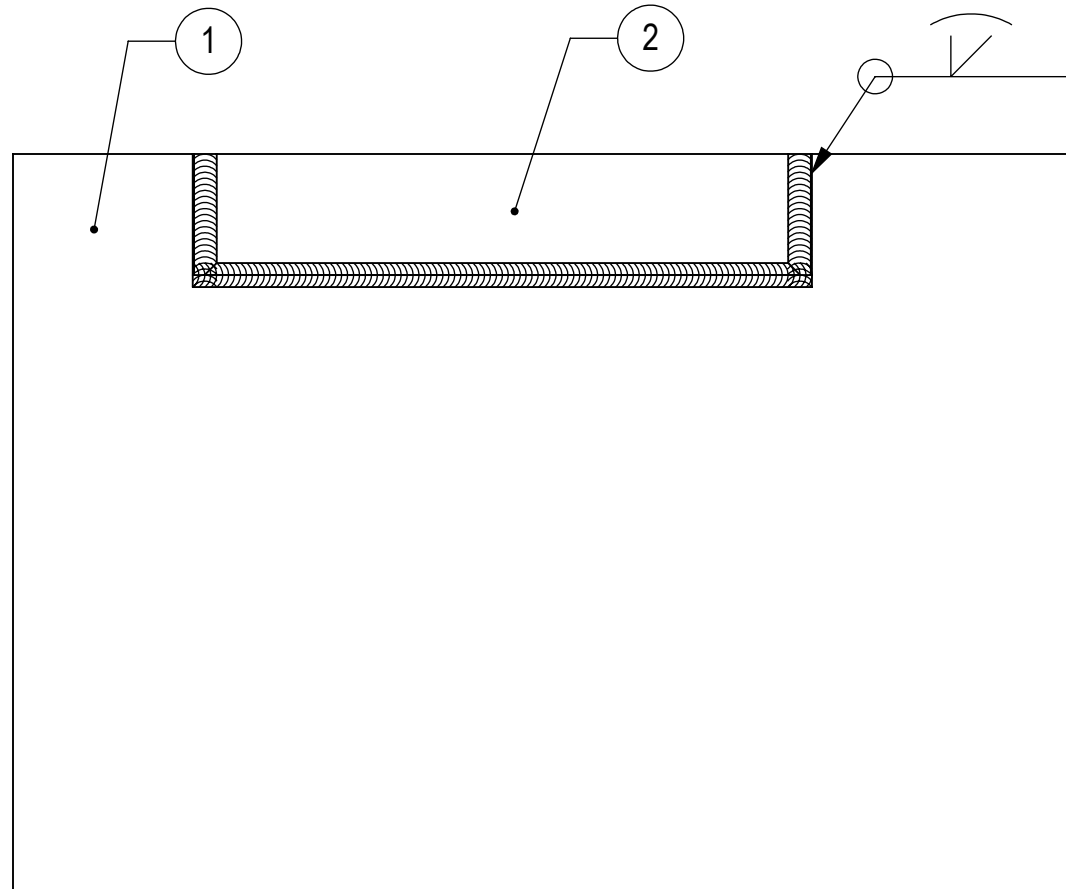
2

1

THIS DOCUMENT AND THE INFORMATION CONTAINED IN IT ARE PROPRIETARY AND CONFIDENTIAL TO ELBIT SYSTEMS LTD. NO PERSON IS ALLOWED TO COPY, REPRINT, REPRODUCE OR PUBLISH ANY PART OF THIS DOCUMENT NOR DISCLOSE ITS CONTENTS TO OTHERS, NOR MAKE ANY USE OF IT, NOR ALLOW OR ASSIST OTHERS TO MAKE ANY USE OF IT-UNLESS BY THE PRIOR WRITTEN EXPRESS AUTHORIZATION OF ELBIT SYSTEMS LTD. AND THEN ONLY TO THE EXTENT AUTHORIZED. (C) COPYRIGHT-ELBIT SYSTEMS LTD, 2001

SHEET REV STATUS
ALL SHEETS ARE THE SAME REVISION

REVISION RECORD				
REV	ECO	DESCRIPTION	DATE	APVD
01		VARIOUS CHANGES.	30.5.2021	UDI ORON
02		NOTE 2 WELDING CHANGED.	8.6.2021	UDI ORON
03		SEE SHEET 2. DIM. 60 WAS 57. DIM. $\phi 45+0.05$ WAS $\phi 45+0.1$.	15.6.2021	UDI ORON



WELDING

- NOTES:
1. AFTER WELDING AND MACHINING DEBURR AND REMOVED SHARP EDGES.
 2. WELDING: WELD PER IMI SPECIFICATION PS 88.57.04 E. USE WIRE ER 70S6 PER AWS 5.18. WIRE DIAMETER 1mm OR 1.2mm.
 3. FINISH: PAINT PER IMI SPECIFICATION PS 88.53.02 E. USE EPOXY PRIMER AND EPOXY TOP COATING. TOP COATING COLOR BLACK 27038 PER FED-STD-595C OR CLOSE TO IT.

ITEM NO.	PART NUMBER	DESCRIPTION	REV
2	06360-12003-01	UPPER MOUNT	1
1	06360-12002-01	BASE	1

UNLESS OTHERWISE SPECIFIED

PROFILE: N/A

TOLERANCES

LINEAR	ANGULAR
ISO-2768-m	ISO-2768-m

1st ANGLE PROJECTION

SURFACE TEXTURE IN Micro Meter

CONTRACT NO.

FCTN	NAME	SIGN	DATE
DRW	GILA K.		
CHKD	UDI ORON		

Elbit Systems Land P.O.B 1044 Ramat Hasharon, 4711001, Israel

TITLE: **FRONT LH OUTER BASE**

SIZE	CAGE CODE	DWG NO	REV
C	3971A	06360-12001-101	03

SCALE 1:5 AUTOMATED DRAWING (SW) SHEET 1 OF 2

APPLICABLE STANDARDS:
 INTERPRET THIS DRAWING IAW ASME Y14.100-2017.
 ASME Y14.5-2009, DIMENSIONING AND TOLERANCING IN MM.
 CTS - 100% LOT INSPECTION. CTS VII - LOT INSPECTION IAW MIL-STD-1916 VL=VII. MTF V - LOT INSPECTION IAW MIL-STD-1916 VL=V.
 CTR - 100% LOT INSPECTION. CTR VII - LOT INSPECTION IAW MIL-STD-1916 VL=VII. MTF VI - LOT INSPECTION IAW MIL-STD-1916 VL=VI.
 DIM. W/O MARKING - LOT INSPECTION IAW MIL-STD-1916 VL=IV OR VL=III.

NEXT ASSEMBLY
06360-12000-101

Approximate Weight: 71.89 [Kg]

4

3

2

1

DWG NO 06360-12001-101
SH 1

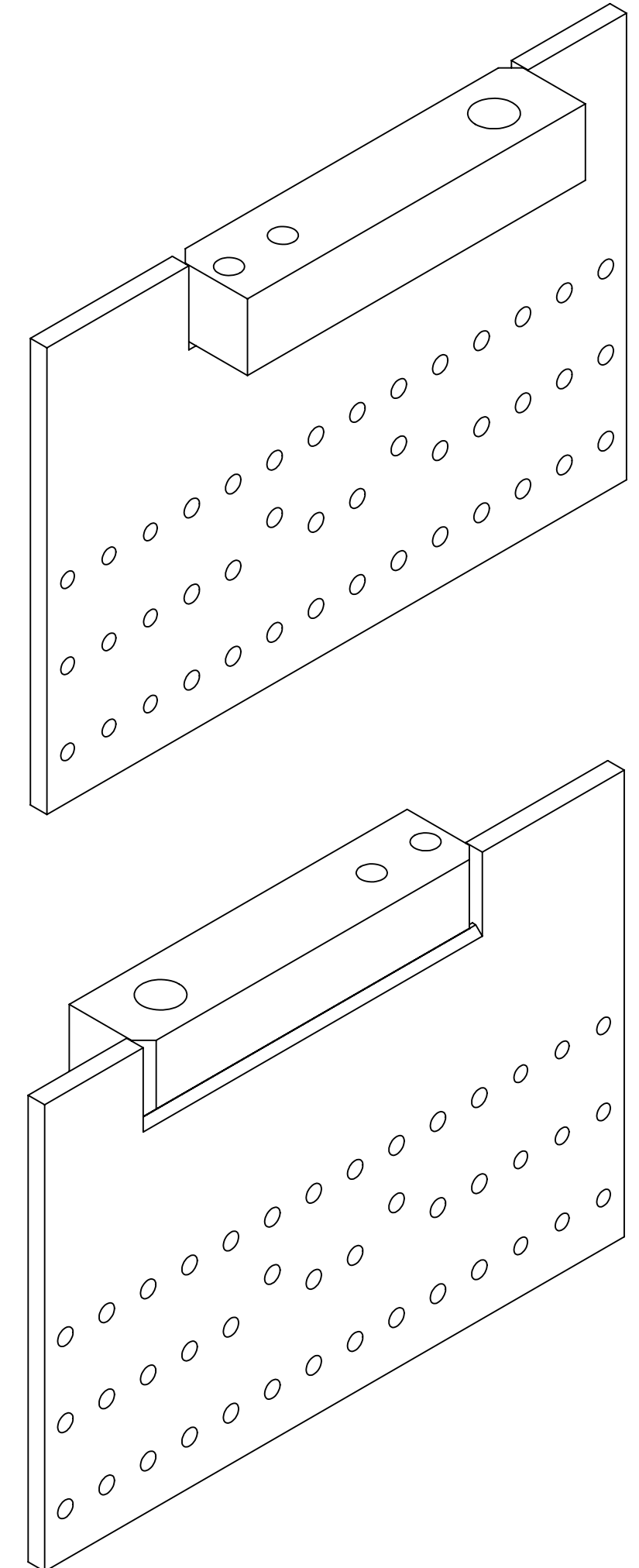
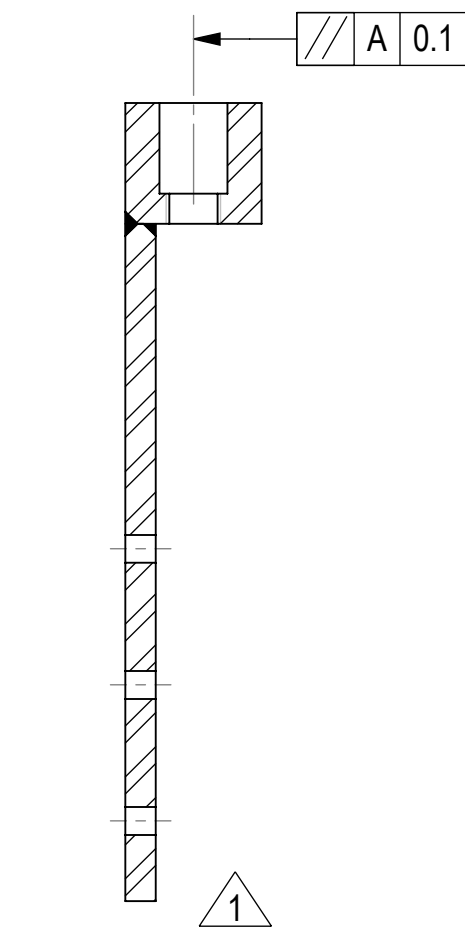
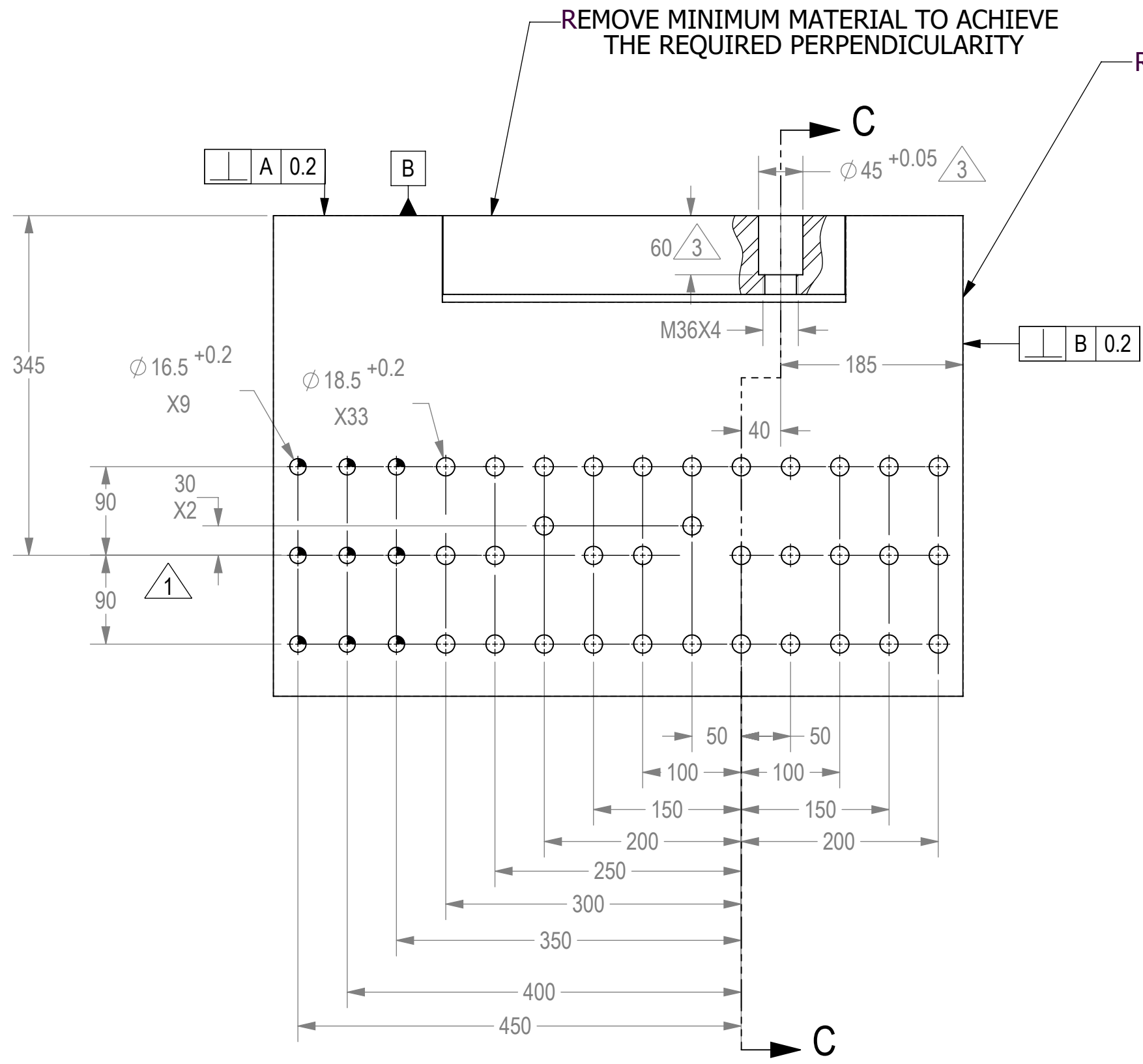
THIS DOCUMENT AND THE INFORMATION CONTAINED IN IT ARE PROPRIETARY AND CONFIDENTIAL TO ELBIT SYSTEMS LTD. NO PERSON IS ALLOWED TO COPY, REPRINT, REPRODUCE OR PUBLISH ANY PART OF THIS DOCUMENT NOR DISCLOSE ITS CONTENTS TO OTHERS, NOR MAKE ANY USE OF IT, NOR ALLOW OR ASSIST OTHERS TO MAKE ANY USE OF IT-UNLESS BY THE PRIOR WRITTEN EXPRESS AUTHORIZATION OF ELBIT SYSTEMS LTD. AND THEN ONLY TO THE EXTENT AUTHORIZED. (C) COPYRIGHT-ELBIT SYSTEMS LTD, 2001

SHEET REV STATUS

ALL SHEETS ARE THE SAME REVISION

REVISION RECORD

REV	ECO	DESCRIPTION	DATE	APVD



MACHINING

APPLICABLE STANDARDS:
 INTERPRET THIS DRAWING IAW ASME Y14.100-2017.
 ASME Y14.5-2009, DIMENSIONING AND TOLERANCING IN MM.
 CTS - 100% LOT INSPECTION. CTS VII - LOT INSPECTION IAW MIL-STD-1916 VL=VII. MTF V - LOT INSPECTION IAW MIL-STD-1916 VL=V.
 CTR - 100% LOT INSPECTION. CTR VII - LOT INSPECTION IAW MIL-STD-1916 VL=VII. MTF VI - LOT INSPECTION IAW MIL-STD-1916 VL=VI.
 DIM. W/O MARKING - LOT INSPECTION IAW MIL-STD-1916 VL=IV OR VL=III.

NEXT ASSEMBLY
 06360-12000-101

Approximate Weight: 71.89 [Kg]

UNLESS OTHERWISE SPECIFIED

PROFILE: N/A

TOLERANCES
 LINEAR: ISO-2768-m
 ANGULAR: ISO-2768-m

1st ANGLE PROJECTION

3.2
 SURFACE TEXTURE IN Micro Meter

CONTRACT NO		FCTN		NAME		SIGN		DATE	

P.O.B 1044 Ramat Hasharon, 4711001, Israel	
TITLE	
FRONT LH OUTER BASE	
SIZE	CAGE CODE
C	3971A
DWG NO	REV
06360-12001-101	03
SCALE	AUTOMATED DRAWING (SW)
1:5	SHEET 2 OF 2