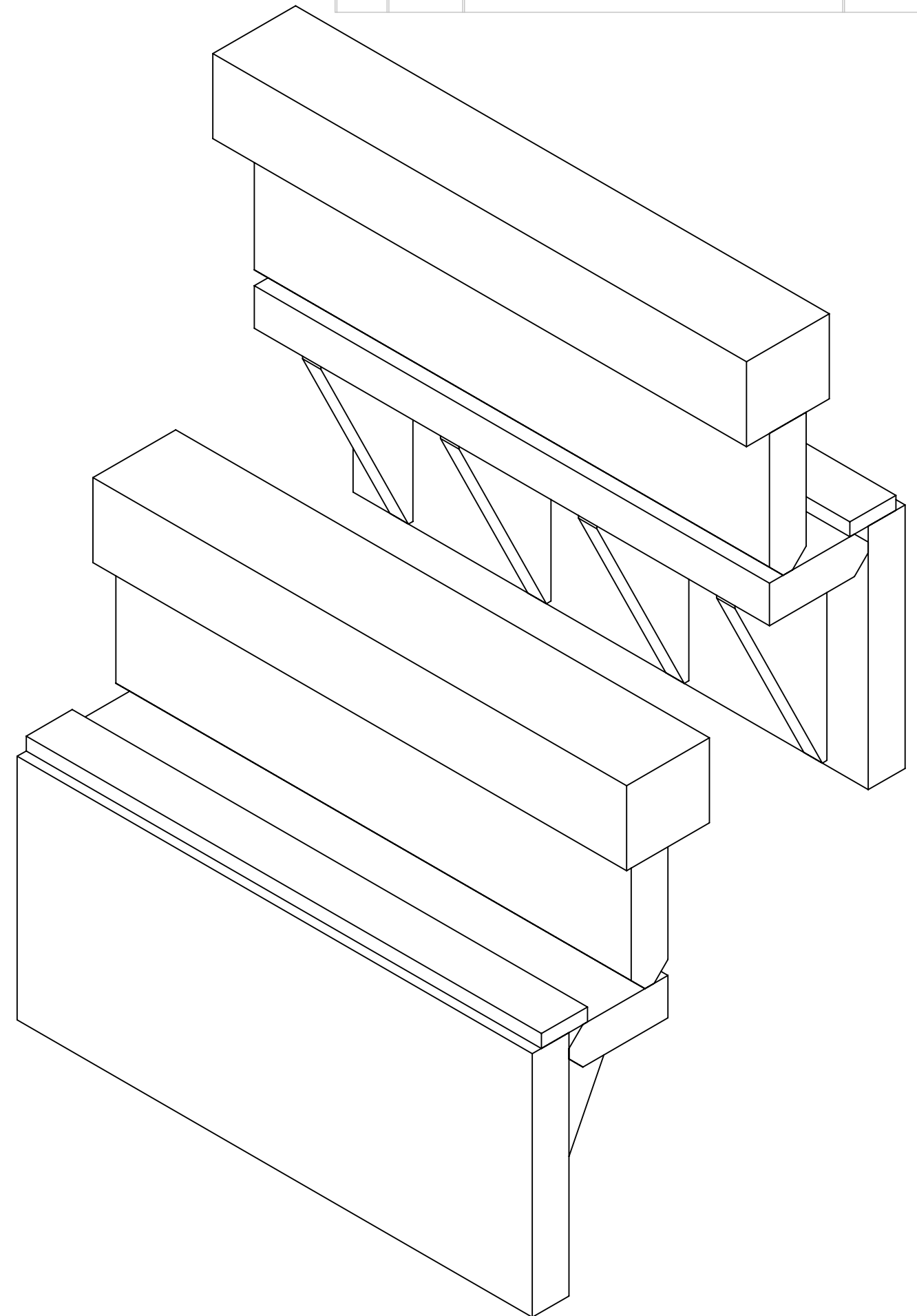
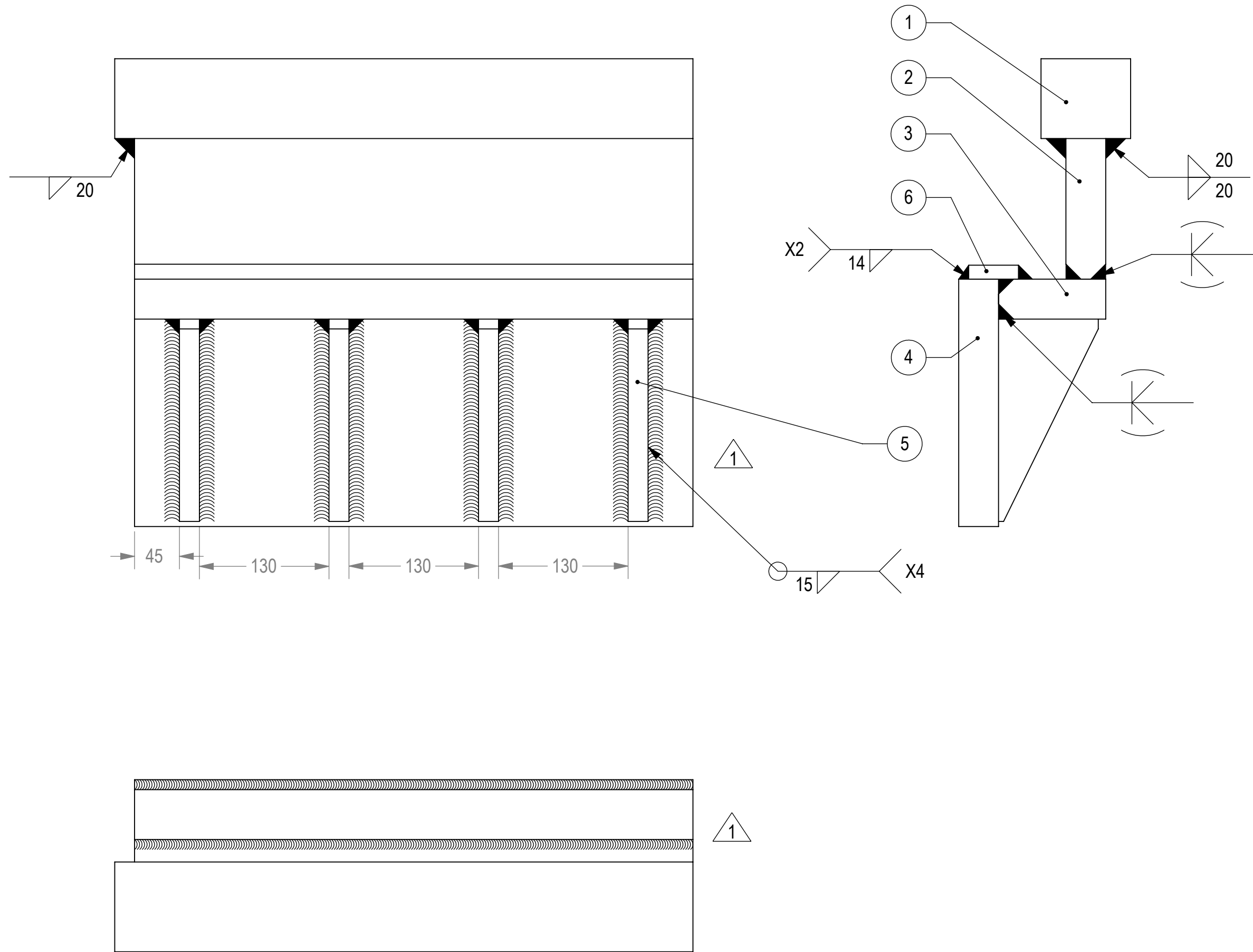


THIS DOCUMENT AND THE INFORMATION CONTAINED IN IT ARE PROPRIETARY AND CONFIDENTIAL TO ELBIT SYSTEMS LTD. NO PERSON IS ALLOWED TO COPY, REPRINT, REPRODUCE OR PUBLISH ANY PART OF THIS DOCUMENT NOR DISCLOSE ITS CONTENTS TO OTHERS, NOR MAKE ANY USE OF IT, NOR ALLOW OR ASSIST OTHERS TO MAKE ANY USE OF IT-UNLESS BY THE PRIOR WRITTEN EXPRESS AUTHORIZATION OF ELBIT SYSTEMS LTD. AND THEN ONLY TO THE EXTENT AUTHORIZED. (C) COPYRIGHT-ELBIT SYSTEMS LTD, 2001

SHEET REV STATUS
ALL SHEETS ARE THE SAME REVISION

REVISION RECORD				
REV	ECO	DESCRIPTION	DATE	APVD
01		VARIOUS CHANGES.	30.5.2021	UDI ORON
02		NOTE 2 WELDING CHANGED.	8.6.2021	UDI ORON
03		SEE SHEET 2. DIM. 60 WAS 57. DIM. $\phi 45+0.05$ WAS $\phi 45+0.1$	15.6.2021	UDI ORON



WELDING

ITEM NO.	PART NUMBER	DESCRIPTION	QTY
6	06360-12013-01	SUPPORT PLATE	1
5	06360-12009-01	RIB	4
4	06360-12008-01	VL PLATE	1
3	06360-12007-01	H PLATE	1
2	06360-12006-01	VU PLATE	1
1	06360-12005-01	UPPER MOUNT	1

- NOTES:
 1. AFTER WELDING AND MACHINING DEBURR AND REMOVED SHARP EDGES.
 2. WELDING: WELD PER IMI SPECIFICATION PS 88.57.04 E. USE WIRE ER 70S6 PER AWS 5.18. WIRE DIAMETER 1mm OR 1.2mm.
 3. FINISH: PAINT PER IMI SPECIFICATION PS 88.53.02 E. USE EPOXY PRIMER AND EPOXY TOP COATING. TOP COATING COLOR BLACK 27038 PER FED-STD-595C OR CLOSE TO IT.

APPLICABLE STANDARDS:
 INTERPRET THIS DRAWING IAW ASME Y14.100-2017.
 ASME Y14.5-2009, DIMENSIONING AND TOLERANCING IN MM.
 CTS - 100% LOT INSPECTION. CTS VII - LOT INSPECTION IAW MIL-STD-1916 VL=VII. MTF V - LOT INSPECTION IAW MIL-STD-1916 VL=V.
 CTR - 100% LOT INSPECTION. CTR VII - LOT INSPECTION IAW MIL-STD-1916 VL=VII. MTF VI - LOT INSPECTION IAW MIL-STD-1916 VL=VI.
 DIM. W/O MARKING - LOT INSPECTION IAW MIL-STD-1916 VL=IV OR VL=III.

NEXT ASSEMBLY
06360-12000-101

Approximate Weight: 129.66 [Kg]

UNLESS OTHERWISE SPECIFIED		CONTRACT NO.	
PROFILE: <input type="checkbox"/> N/A		FCTN	NAME
TOLERANCES	ANGULAR	DRW	GILA K.
LINEAR	ISO-2768-m	CHKD	UDI ORON
1st ANGLE PROJECTION			
SURFACE TEXTURE IN Micro Meter			

P.O.B 1044 Ramat Hasharon, 4711001, Israel	
TITLE FRONT RH INNER BASE	
SIZE C	CAGE CODE 3971A
DWG NO. 06360-12012-101	REV 03
SCALE 1:4 AUTOMATED DRAWING (SW) SHEET 1 OF 2	

DWG NO 06360-12012-101 SH 1

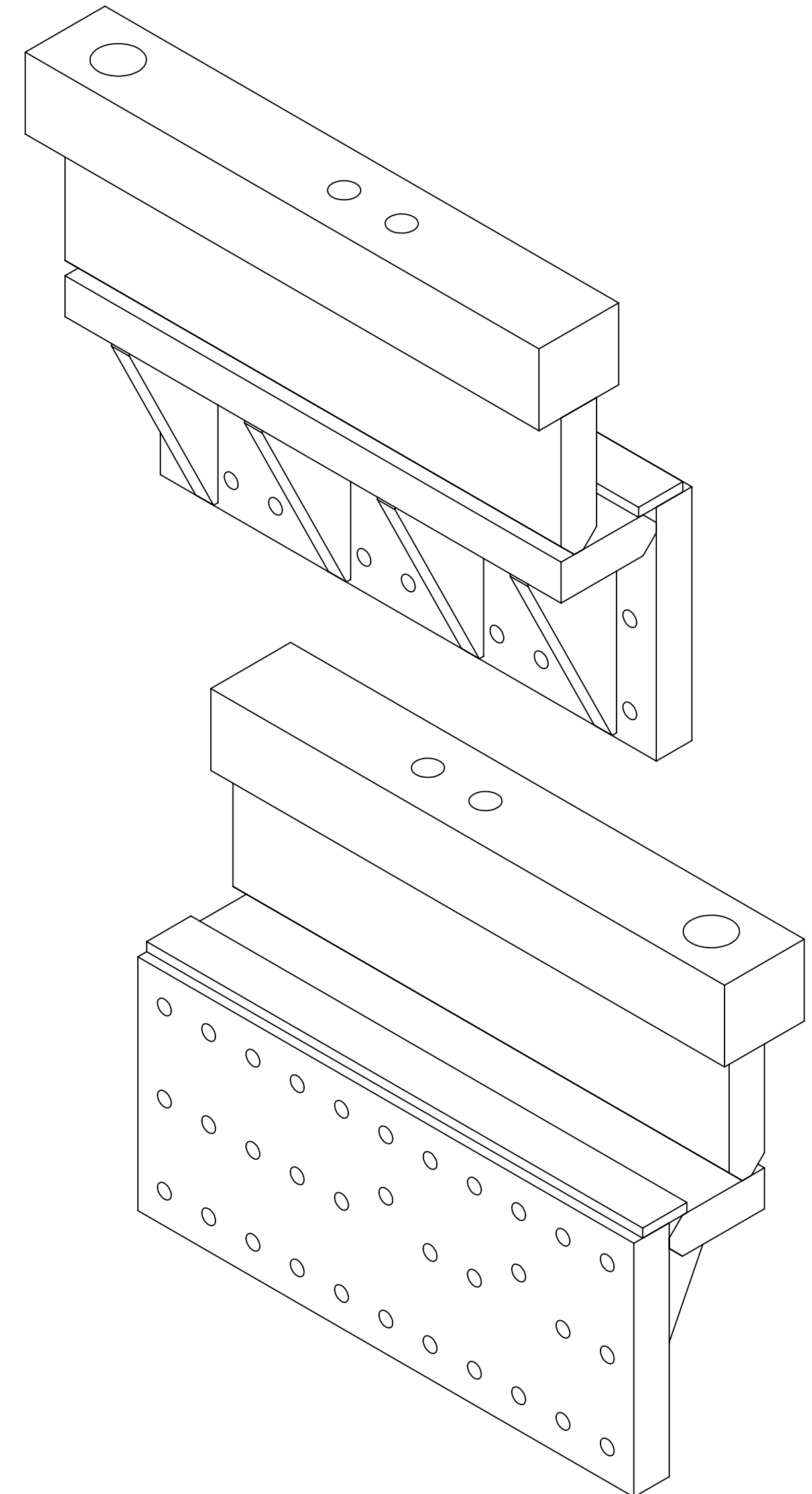
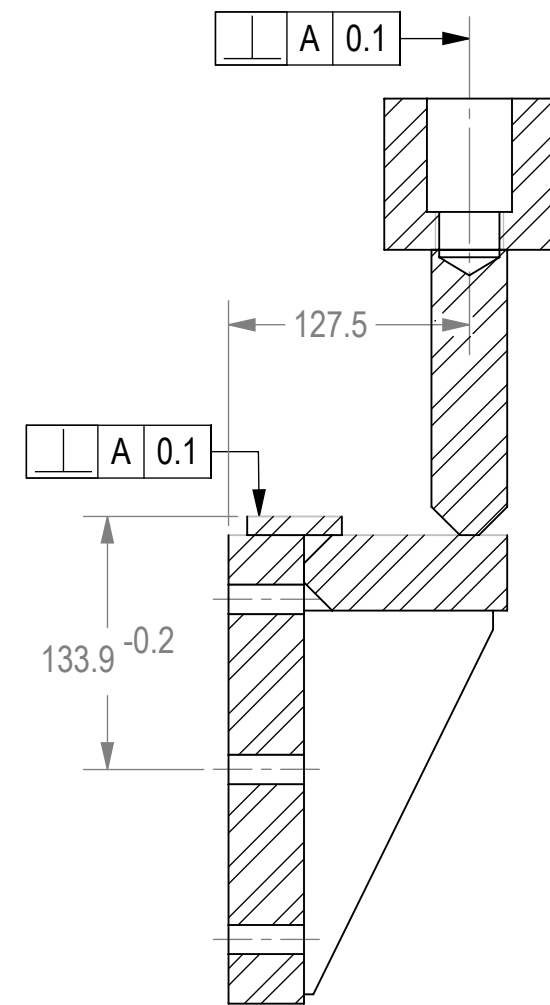
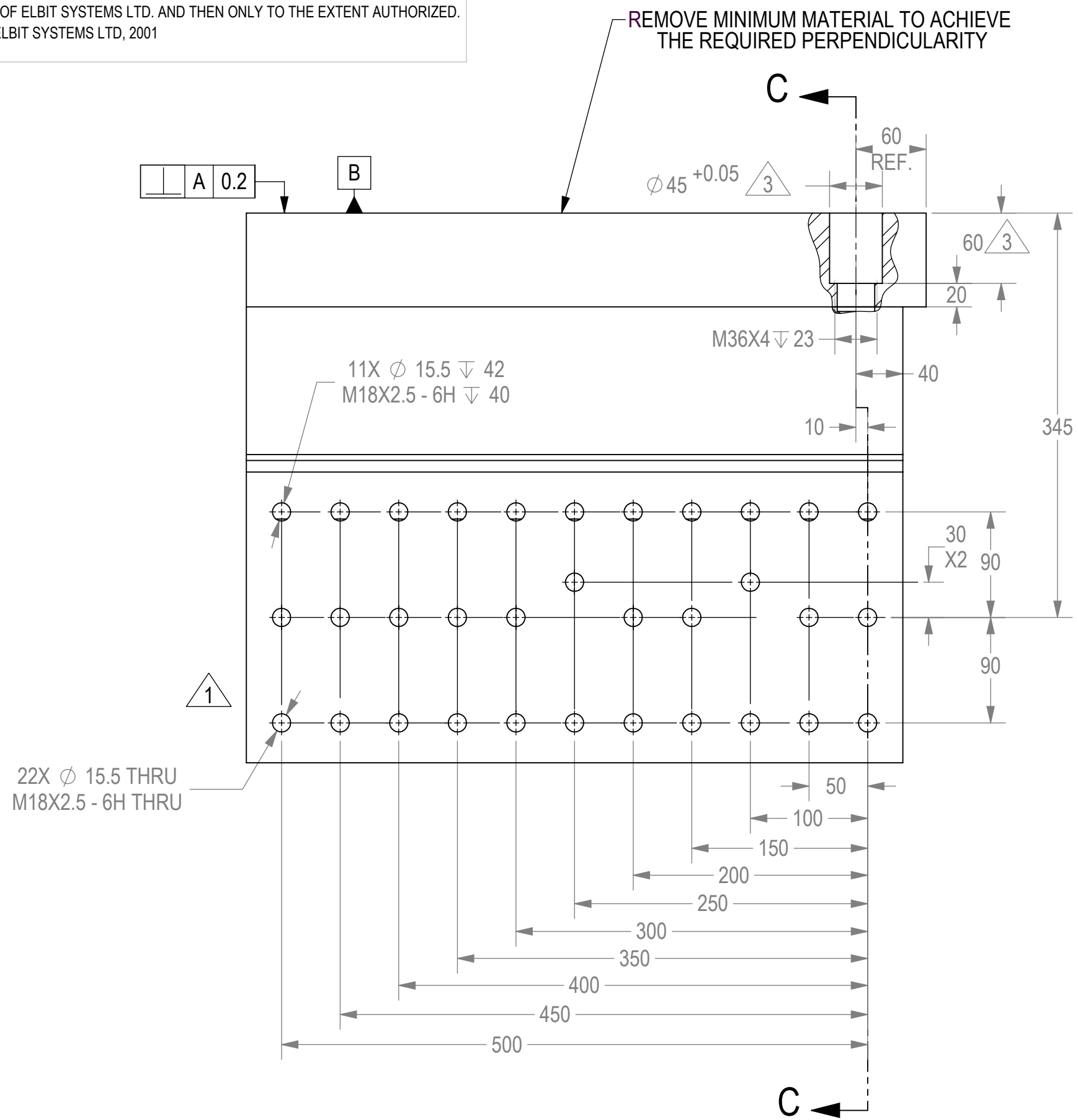
THIS DOCUMENT AND THE INFORMATION CONTAINED IN IT ARE PROPRIETARY AND CONFIDENTIAL TO ELBIT SYSTEMS LTD. NO PERSON IS ALLOWED TO COPY, REPRINT, REPRODUCE OR PUBLISH ANY PART OF THIS DOCUMENT NOR DISCLOSE ITS CONTENTS TO OTHERS, NOR MAKE ANY USE OF IT, NOR ALLOW OR ASSIST OTHERS TO MAKE ANY USE OF IT-UNLESS BY THE PRIOR WRITTEN EXPRESS AUTHORIZATION OF ELBIT SYSTEMS LTD. AND THEN ONLY TO THE EXTENT AUTHORIZED. (C) COPYRIGHT-ELBIT SYSTEMS LTD, 2001

SHEET REV STATUS

ALL SHEETS ARE THE SAME REVISION

REVISION RECORD

REV	ECO	DESCRIPTION	DATE	APVD



MACHINING

APPLICABLE STANDARDS:
 INTERPRET THIS DRAWING IAW ASME Y14.100-2017.
 ASME Y14.5-2009, DIMENSIONING AND TOLERANCING IN MM.
 CTS - 100% LOT INSPECTION. CTS VII - LOT INSPECTION IAW MIL-STD-1916 VL=VII. MTF V - LOT INSPECTION IAW MIL-STD-1916 VL=V.
 CTR - 100% LOT INSPECTION. CTR VII - LOT INSPECTION IAW MIL-STD-1916 VL=VII. MTF VI - LOT INSPECTION IAW MIL-STD-1916 VL=VI.
 DIM. W/O MARKING - LOT INSPECTION IAW MIL-STD-1916 VL=IV OR VL=III.

NEXT ASSEMBLY
 06360-12000-101

Approximate Weight: 129.66 [Kg]

UNLESS OTHERWISE SPECIFIED

PROFILE: ∇ N/A

TOLERANCES
 LINEAR ISO-2768-m
 ANGULAR ISO-2768-m

1st ANGLE PROJECTION

3.2 ∇

SURFACE TEXTURE IN Micro Meter

CONTRACT NO		FCTN	NAME	SIGN	DATE
DRW	GILA K.				
CHKD	UDI ORON				

Elbit Systems Land P.O.B 1044 Ramat Hasharon, 4711001, Israel

TITLE
FRONT RH INNER BASE

SIZE C	CAGE CODE 3971A	DWG NO 06360-12012-101	REV 03
------------------	---------------------------	----------------------------------	------------------

SCALE 1:4 AUTOMATED DRAWING (SW) SHEET 2 OF 2

DWG NO 06360-12012-101
 SH 2