

THIS DOCUMENT AND THE INFORMATION CONTAINED IN IT ARE PROPRIETARY AND CONFIDENTIAL TO ELBIT SYSTEMS LTD. NO PERSON IS ALLOWED TO COPY, REPRINT, REPRODUCE OR PUBLISH ANY PART OF THIS DOCUMENT NOR DISCLOSE ITS CONTENTS TO OTHERS, NOR MAKE ANY USE OF IT, NOR ALLOW OR ASSIST OTHERS TO MAKE ANY USE OF IT-UNLESS BY THE PRIOR WRITTEN EXPRESS AUTHORIZATION OF ELBIT SYSTEMS LTD. AND THEN ONLY TO THE EXTENT AUTHORIZED. (C) COPYRIGHT-ELBIT SYSTEMS LTD, 2001

DWG NO 06360-14001-01

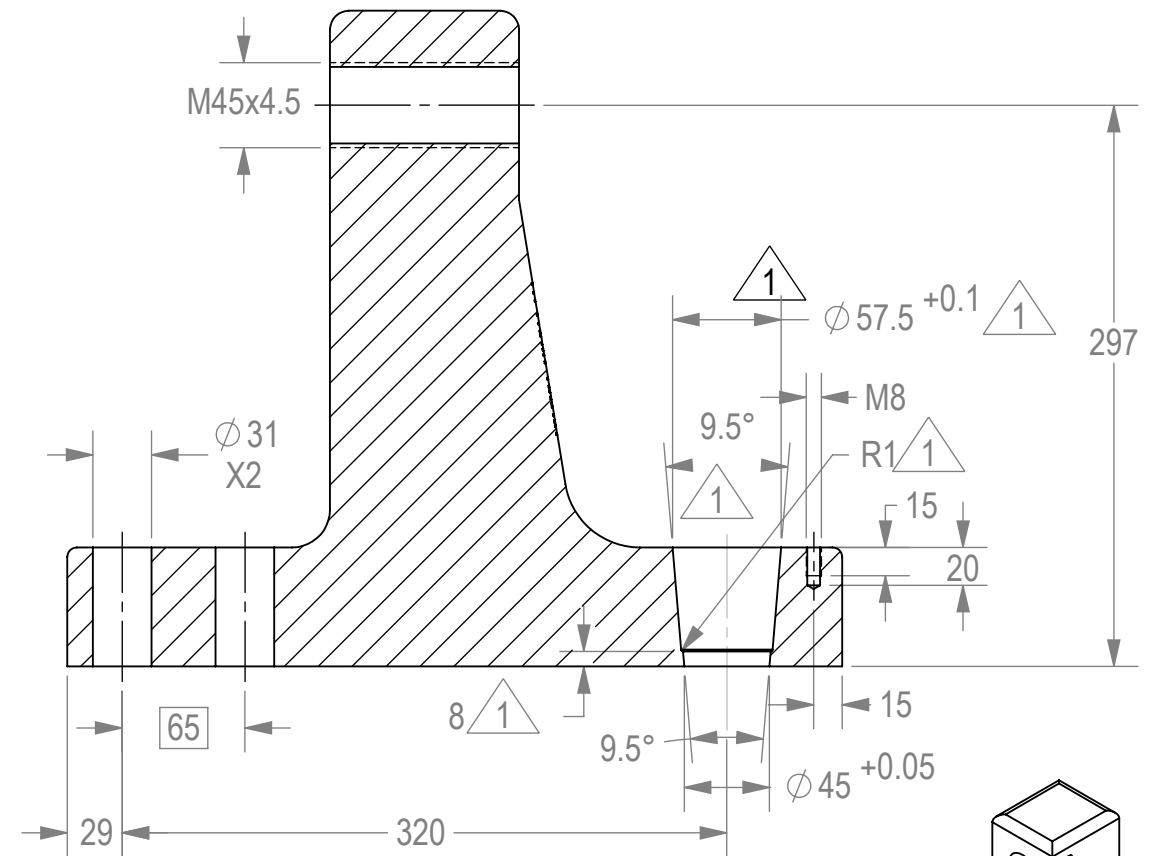
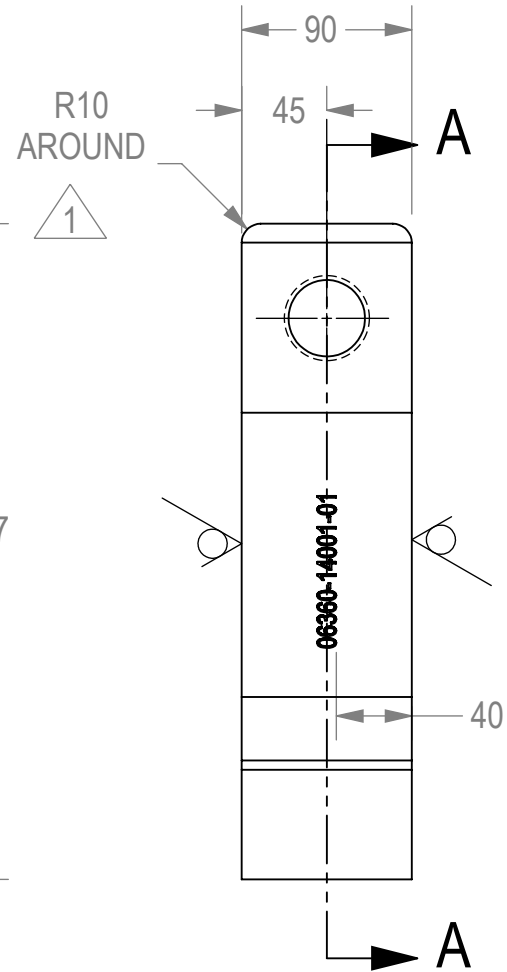
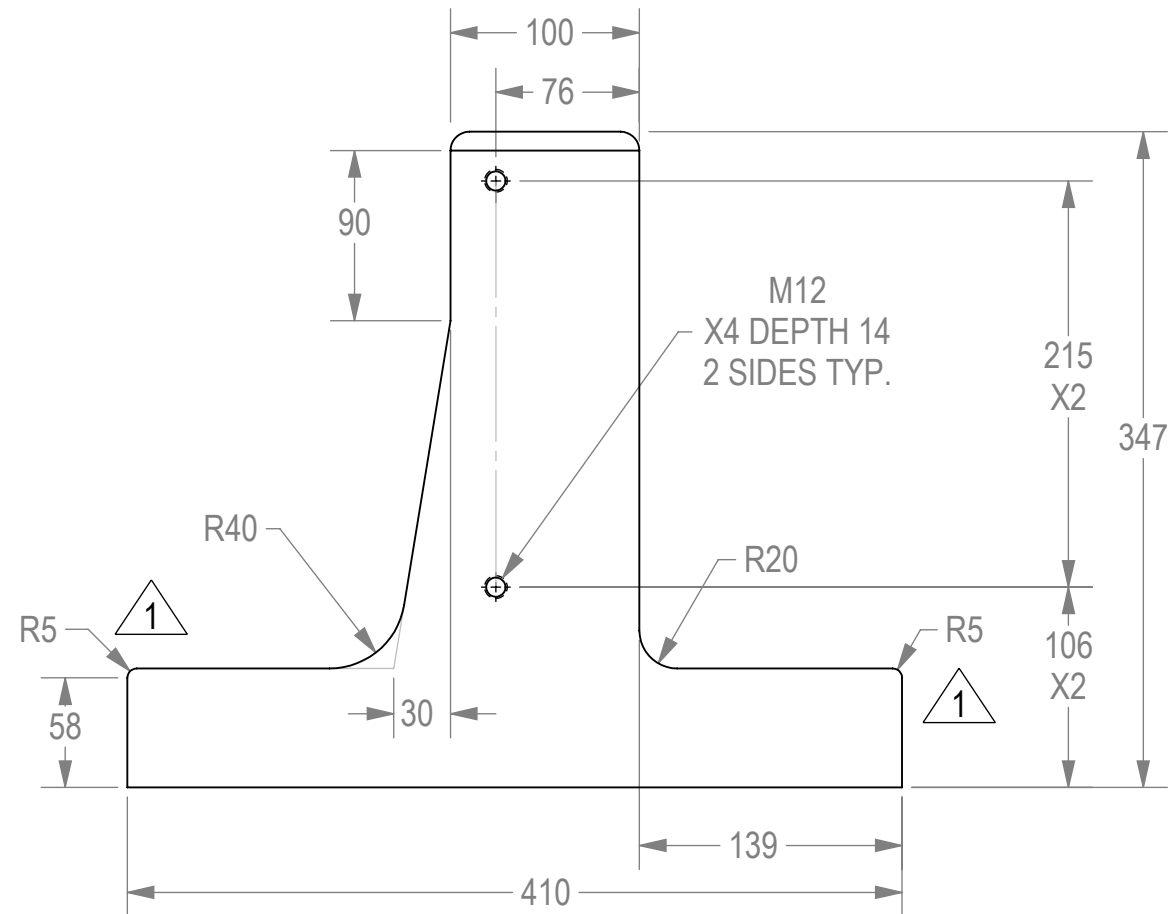
SH 1

SHEET REV RECORD

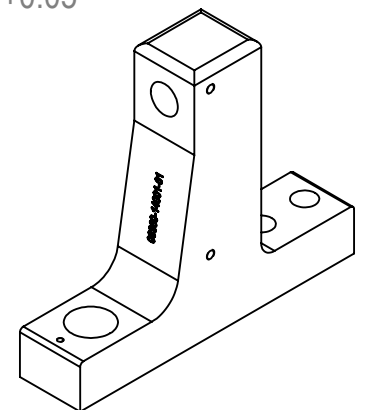
ALL SHEETS ARE THE SAME REVISION

REVISION RECORD

REV	ECO	DESCRIPTION	DATE	APVD
01		VARIOUS CHANGES.	17.6.2021	UDI ORON



SECTION A-A
SCALE 1:4



NOTES:

- MATERIAL: CREUSABRO 4800.
- IMPRINT THE ASSEMBLY PART NO. IN THE MARKED PLACE:
LETTER HEIGHT 10 MM, DEPTH 0.5÷1 MM.
LETTER LINE THICKNESS 1.5 MM.
- FINISH: PAINT PER IMI SPECIFICATION PS 88.53.02 E. PERFORM PHOSPHTE COATING PER PARA. 4.1.5 OF ABOVE SPECIFICATION. USE EPOXY PRIMER AND EPOXY TOP COATING EXCEPT THE CONE HOLE. TOP COATING COLOR AGATE GREY RAL 7038.

APPLICABLE STANDARDS:
INTERPRET THIS DRAWING IAW ASME Y14.100 2017.
ASME Y14.5-2009, DIMENSIONING AND TOLERANCING IN MM.

CTS - 100% LOT INSPECTION. CTS VII - LOT INSPECTION IAW MIL-STD-1916 VL=VII. MTF V - LOT INSPECTION IAW MIL-STD-1916 VL=V.
CTR - 100% LOT INSPECTION. CTR VII - LOT INSPECTION IAW MIL-STD-1916 VL=VII. MTF VI - LOT INSPECTION IAW MIL-STD-1916 VL=VI.
DIM. W/O MARKING - LOT INSPECTION IAW MIL-STD-1916 VL=IV OR VL=III.

NEXT ASSEMBLY
06360-14000-101

Approximate Weight: 37.722 [Kg]

UNLESS OTHERWISE SPECIFIED

PROFILE: N/A

TOLERANCES
LINEAR ANGULAR

ISO-2768-m ISO-2768-m

1st. ANGLE PROJECTION



SURFACE TEXTURE IN Micro Meter

3.2

CONTRACT NO.

FCTN	NAME	SIGN	DATE
DRW	GILA K.		
CHKD	UDI ORON		

P.O.B 1044 Ramat Hasharon, 4711001, Israel

TITLE
FRONT LOCKER

SIZE	CAGE CODE	DWG NO	REV
B	3971A	06360-14001-01	01

SCALE 1:4 AUTOMATED DRAWING (SW) SHEET 1 OF 1